



CRWYS PRIMARY SCHOOL



GOVERNORS' ANNUAL REPORT TO PARENTS 2015 – 2016 School Year



Be all you can be- Byddwch yr hyn gallwch fod.

UNCRC Article 29 - Your right to become the best that you can be

Letter from the Chair of Governors – Mrs Linda Place

On behalf of the Governing Body I have pleasure in presenting the Annual Report to parents and guardians for 2015/2016.

I know Mr Saer will agree with me that the first year of his tenure as Headteacher at Crwys has flown by. During that time he has settled in, implemented new systems, started new initiatives and moved the school forward in several areas.

Many pupils have received Seren yr Wythnos recognition and it is a pleasure to see their smiling faces as they receive their certificates. In Crwys we have always placed emphasis on the achievements of children in all aspects of school life, not just academic progress, and this is a lovely way to show appreciation of their efforts.

One of the great successes of this year has been the improvement in Attendance. Our target for the year from our Challenge Advisor was to move from 95.3% to 95.8% attendance but in fact we exceeded this target and achieved 96.12%. This is a magnificent effort. Good attendance is essential for strong, sustained learning and it apparent both at individual and class level that the pupils are recognising this and are keen not to miss school. The incentives, such as the end of year Prize Draw and the Attendance certificates, should not be underestimated, but attendance is a focus throughout Swansea schools this year and Crwys is already ahead of the game as one of the best performing Primary schools in the county. Well done to parents and pupils for their efforts!

There have been some major improvements in our outside facilities. New Adventure Trail equipment has been installed on the yard which the children thoroughly enjoy using. The outside classroom has been weatherproofed to provide a more suitable environment for all-weather learning and the PTA have very kindly agreed to buy a pizza oven to add to its attractions. This will afford many learning opportunities and is sure to be well used on school occasions like Sports day and Fete week. Some of the outdoor furniture has also been painted by the school Gardening Club, making the yard a bright and welcoming area for the pupils to enjoy.

Outdoor learning continues to be a focus in Crwys and we are lucky that the children can use the woodland area in Dukefield to extend their knowledge and experience. We are collaborating with the Outdoor Schools Project and there are other ideas for the future to extend our pupils' understanding of their environment. This is becoming an area of much discussion, especially in Early Years education and once again Crwys is in the vanguard of this style of learning.

Technology plays an important role in all our lives and the school is moving forward in several areas. Thanks to the staff for keeping us posted on the school Twitter account. It is so interesting to see what the children are doing in and out of the classroom, particularly when we ask "What did you do today in school?" and the answer is "Nothing"! Now we can see for ourselves the lessons, the visitors, the outdoor experiences, the cookery classes and many more of the everyday happenings of school life. The use of QR codes has become the norm in school books and around the school too. The purchase of Chrome Books and more I pads have proved valuable in improving the digital competency of the pupils and their confidence in using all this technology as a tool is evident in the classroom.

Finally, as always, we send our thanks to all those who work so hard to enable each pupil "To be the best that you can be". We look forward to another happy and successful year in 2017.

CRWYS PRIMARY SCHOOL GOVERNING BODY 2015/2016

The Chair and the Clerk to the Governing Body can be contacted at Crwys Primary, Chapel Road, Three Crosses, Swansea SA4 3PU, telephone (01792) 872473.

<u>Name</u>	<u>Status</u>	<u>Term End Date</u>
Mrs T Burnell (Clerk)	Clerk	Subject to yearly review
Mr D Saer	Headteacher	Subject to yearly review
Mrs L Place (Chair)	Co-opted	03/12/2018
Mrs B Hansford (Vice Chair)	Co-opted	13/07/2019
Mr Warren Smart	ACO	20/03/2019
Mr Khan Prince	LEA	19/10/2019
Cllr. P Hood-Williams	LEA	31/08/2016
Mr P Place	LEA	21/09/2017
Mr T Basher	Co-opted	05/11/2018
Mrs S Parsell	Parent	01/09/2016
Mrs K Ebdon	Parent	01/09/2019
Mrs S McGregor	Parent	27/11/2016
Mrs K Jones	Parent	12/11/2017
Mrs D Smith	Staff	14/02/2019
Mrs K Jones	Teacher	21/03/2017

Governors are expected to:

- *Agree the aims and values of the school*
- *Agree policies on such things as National Curriculum, Special Education Needs, discipline and attendance, health and safety, staff pay*
- *Influence and approve the School Development Plan*
- *Accept and monitor the school budget*
- *Monitor standards*
- *Ensure individual pupils' needs are met including special educational needs*
- *Recruit and select staff*
- *Provide information about the school for parents*
- *Establish and maintain positive links with the community*
- *Support the day to day operational decisions of the Headteacher*

STAFF DETAILS

Headteacher	Mr D Saer
School Secretary	Mrs T Burnell
Year 5/6	Mr S Short (Deputy Head), Mrs H Holt (0.6), Mrs D Harvey
Year 4/5	Miss M Clifford, Mrs D Smith (0.5)
Year 3/ 4	Mrs K Jones, Mrs N Osmond
Year 2	Miss L Gay, Miss S Francis
Reception/ Year 1	Mrs S Davies (0.8), Mrs M Leyshon (0.2), Mrs R Harris Mrs A Pearson(0.6), Mrs E Bevan(0.4),Mrs C Baglole
Specialist Teaching Facility	Mrs C Deslandes Mrs C Williams,,Mr R Egan
Nursery	Mrs R Harris (0.5), PPA (0.5) Mrs W Cornelius
Support Teacher	Mr P Williams
Dedicated TA for Catchup	Mrs D Smith (0.5)
School Cook	Mrs J James, Miss D Small
Kitchen Staff	Mrs B Morgan, Mrs P Boat, Mrs E O'Keefe
Road Crossing Patrol	Mrs D Demock
Caretaker	Mr D Salter
Cleaner	Mrs E O'Keefe
Violin Teacher	Mrs B Whitehead
Brass Teacher	Mr A George
I T Support	Mr I Tolley
Breakfast Club	Mrs W Cornelius, Miss S Francis
After School Club	Mrs D Harvey, Mrs C Williams
School Secretary & Clerk to Gov. Body	Mrs T Burnell

Class Lists for July 2015

CLASS	Class size	Split	Year Group	Teacher
Yr 5/6	34	13/21	Yr 6 – 21	Mr Simon Short
Yr 4/5	34	24/10	Yr 5 – 23 Yr 4 - 24	Miss Melissa Clifford
Yr 3	26	26	Yr 3 – 26	Mrs Kim Jones
Yr 1/2	25	5/20	Yr 2 – 20	Miss Lisa Gay
R/Y1	22	7/15	Yr 1 – 20 Rec – 7	Mrs Sarah Davies (0.8) Mrs Melanie Leyshon (0.2)
Nursery (AM only)	30			Mrs Rachel Harris
STF Unit	8	Yr 2 – 2 Yr 1 – 3 Rec – 2 N - 1	8	Mrs C Deslandes
			Total on roll as on 02/11/15	147 F/T <u>30 P/T</u> 177 162 FTE

Attendance for 15/16

Group	Authorised Absences(%)	Unauthorised Absences(%)	Possible	% Attend
STF	3.1	1.0	100.0	95.3
Rec/Y1	2.6	0.1	100.0	97.3
Y2/Y2	3.1	1.5	100.0	95.4
Y3	3.2	0.7	100.0	96.2
4/5	3.6	1.0	100.0	95.3
Y5/6	2.7	0.1	100.0	97.2
Totals	3.1	0.7%	100.0	96.2

This shows an overall improvement of 1.1% over the previous year.

Term dates

Autumn Term : Thursday 1st September 2016 – Friday 16th December 2016

Half Term: Monday October 24th – Friday October 28th

Spring Term: Tuesday 4th January 2017 – Friday 7th April 2017

Half Term: Monday February 20th – Friday February 24th

Summer Term: Monday 24th April 2017 – Friday 21st July 2017

Half Term: Monday May 29th – Friday June 2nd

Inset Days are on : Inset days for this academic year will be:

Thursday September 1st
Friday September 2nd
Tuesday January 3rd
2 more days to be arranged.

PUPIL ASSESSMENTS

On the following pages you will find information about the National Curriculum Assessments. As well as these the children took the National Literacy and Numeracy Tests.

What are Foundation Phase Assessments?

Foundation Phase Assessments take place in year 2, age 6-7. Pupils are assessed in three main areas: (i) Language, Literacy & Communication Skills (LCE), (ii) Mathematical Development (MD) and (iii) Personal & Social Development, Well-being & Cultural Diversity (PSD). The assessments are carried out by the class teacher on a number of pieces of work over several weeks. They are verified by the Head Teacher and moderated by inspectors.

		N	D	W	1	2	3	4	5	6	A
Personal and social development, well-being and cultural diversity.	School	0.0	9.5	0.0	0.0	0.0	0.0	0.0	4.8	85.7	0.0
	Wales	0.1	0.3	0.2	0.2	0.4	0.8	3.1	38.8	55.8	0.2
Language, literacy and communication skills in English.	School	0.0	9.5	0.0	0.0	0.0	0.0	4.8	47.6	38.1	0.0
	Wales	0.1	0.4	0.3	0.3	0.5	1.6	8.9	53.7	34.0	0.2
Mathematical Development	School	0.0	9.5	0.0	0.0	0.0	0.0	0.0	38.1	52.4	0.0
	Wales	0.1	0.3								

Notes

N: Not awarded a level for reasons other than disapplication.

D:

Disapplied under section 364 or 365 of the Education Act 1996

W: Currently working towards Foundation Phase Outcome 1.

A:

Performance Above Foundation Phase Outcome 6.

Foundation Phase Indicator having disaggregated disapplied pupils.

School	94.7%
Wales	86.8%

Foundation Phase Trends

2016	94.7%
2015	88.9%
2014	92.6%
2013	90.9%
2012	73.9%

What are Key Stage 2 Assessments?

Key Stage 2 Assessments take place over the summer term when pupils are in year 6, age 10-11. Pupils are assessed in English, Maths and Science. The assessments are carried out by the class teacher on a number of pieces of work over several weeks. The assessments are verified by the Head Teacher and moderated by inspectors

		N	D	O1	O2	O3	1	2	3	4	5	6+	4+
English	School	0.0	0.0	0.0	0.0	0.0	0.0	0.0	0.0	47.6	52.4	0.0	100.0
	Wales	0.1	0.3	0.1	0.1	0.1	0.5	1.8	7.4	48.8	39.4	1.4	89.6
Mathematics	School	0.0	0.0	0.0	0.0	0.0	0.0	0.0	0.0	47.6	52.4	0.0	100.0
	Wales	0.1	0.3	0.1	0.1	0.1	0.4	1.5	7.1	49.0	39.9	1.4	90.2
Science	School	0.0	0.0	0.0	0.0	0.0	0.0	0.0	0.0	52.4	47.6	0.0	100.0
	Wales	0.1	0.3	0.1	0.1	0.1	0.5	1.4	6.0	50.2	40.9	0.2	91.4

Notes

N: Not awarded a level for reasons other than disapplication.

Disapplied under section 364 or 365 of the Education Act 1996

O3 : National Curriculum Outcomes

: National Curriculum Levels

D:
O1-
1-6

Key Stage 2 – Core Subject Indicator

School	100%
Wales	87.7%

Key Stage 2 Trends

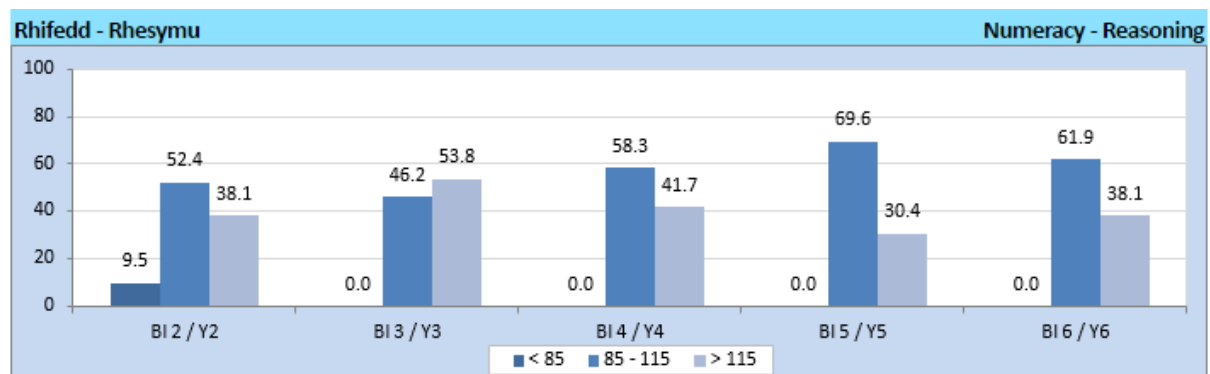
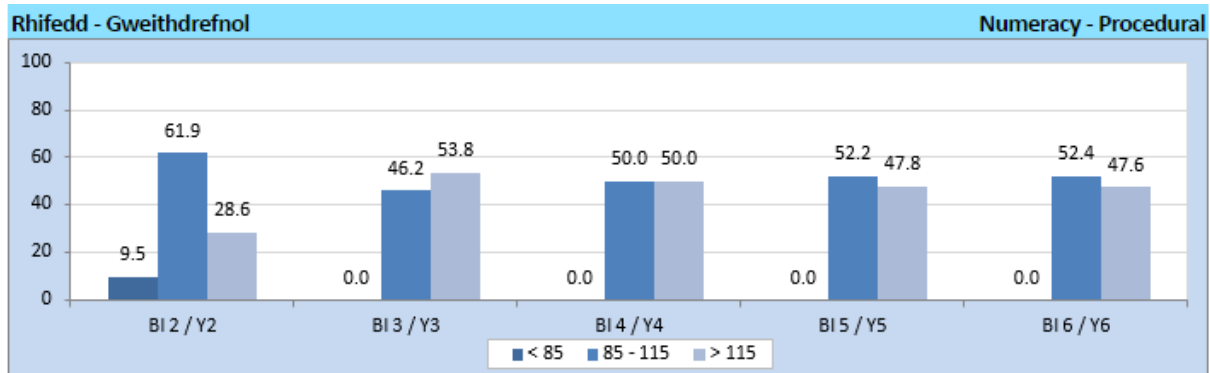
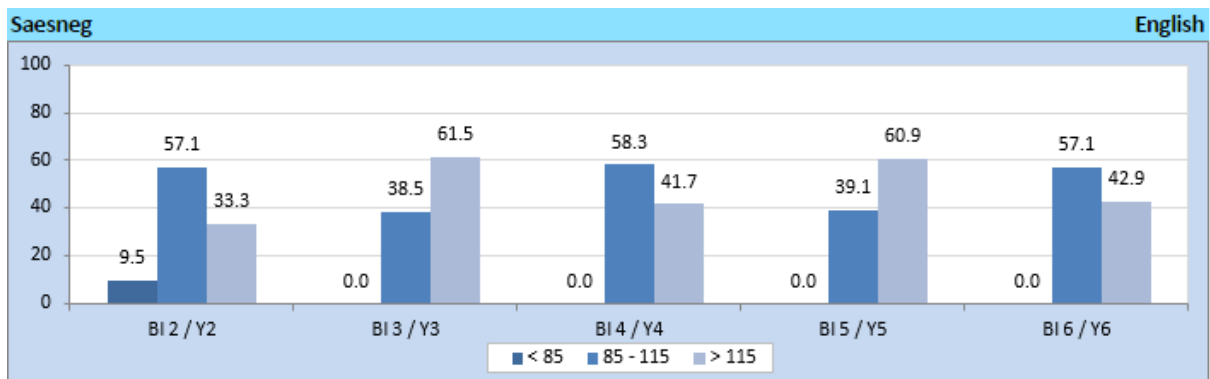
2016	100%
2015	92.0%
2014	88.9%
2013	76.2%
2012	92.3%

What are National Numeracy and Literacy Tests?

National Tests are written papers sat by pupils in years two to six. The pupils at Crwys sit three tests: English Reading, Numeracy Procedural and Numeracy Reasoning. The results are standardised to have a mean average of 100 and a standard deviation of 15 to allow the results to be compared with the Local Authority and the whole of Wales.

How has Crwys performed in the National Tests?

Crwys pupils have performed well when compared with both the Local Authority and Wales; when disaggregating the STF pupils there are no pupils with a score lower than 85 in each year group and more pupils with a score higher than 115 in some subjects and year groups.



- Creative development
- Welsh
- Communication and Literacy
- Physical development

We strive to have a balance between structured learning through child initiated activities and those directed by adults.

Core subjects

Mathematics

English

Science

Welsh as a second Language

Non Core subjects

Technology (Design Technology and Information Communications Technology),

History,

Geography,

Art,

Music

Physical Education

Religious Education is not part of the National Curriculum but is taught as part of the basic curriculum.

Forest Schools

During the 2015-2016 school year we have continued the Outdoor Schools initiative. This has involved the children visiting local woodlands, particularly Crwys Community Woodland. The trips involve both learning about nature and wildlife and using the experience to create art and project work. It has also involved working with members of the local community for example working on a bug house.

Welsh Language Provision

The school is an English medium school but strives to ensure that Welsh has an important place in the curriculum.

All staff have attended courses in order to improve bilingual teaching and use many opportunities for bilingualism in everyday teaching. Classrooms display bilingual signs. The introduction of a range of strategies promotes pupil attainment in oracy, reading and writing. Use of the language by pupils is celebrated through the issuing of certificates.

Specialist Teaching Facility

The Facility caters for children with special educational needs and is supported by regular visits from speech therapists, the school psychological service, welfare officers and the school doctor. The Facility has a special place within the school and wider community and pupils are integrated into the mainstream classes whenever possible.

More Able and Talented

Pupils have attended cluster workshop activities in Art, Welsh, Language and Literacy.

Physical Education at Crwys Primary

A Crwys tradition we strive to uphold is the importance of sport to help develop the 'whole' child, and this year, in particular, has been a very busy and successful one. An impressive 41 pupils, that's 44% of the juniors, have represented the school in a range of sports including: rugby, football, athletics, cross country, swimming, tennis, netball and cricket. Furthermore, the successes, considering the size of the school have been quite staggering. Pupils have reached National finals in swimming, tennis and cricket, while the cricket team were also crowned West Glamorgan champions. Both the boys' and girls' football teams reached the final of the Swansea School's Tournament, while individual pupils have been chosen for numerous District and County Teams. Pupils have also enjoyed some notable individual performances in athletics and swimming. In addition, upper Key Stage 2 pupils have enjoyed residential trips to Borfa House in Port Eynon, Pendine Outdoor Education Centre and a camping trip to Snowdonia.



Healthy Schools

Crwys Primary School is very involved in the Swansea Health Promoting Schools Scheme. UNCRC – Article 24 – Your right to good food and water All food and drink prepared for the children during school time and After School Club is expected to follow Swansea County Council healthy eating guidelines. During break times we have a 'fruit only' policy, as decided upon by the School Council. Children may either purchase a piece of fruit from our 'Fruit Tuckshop' or bring their own from home.

We ask parents of children who bring a packed lunch to school to make every effort to ensure that the packed lunch contains a healthy eating and drinking selection. This is consistent with our Health Promoting Policy. Healthy options are always made available during PTA functions. Staff are also encouraged to follow Healthy Schools guidelines.

Drinking water – Drinking plenty of cold, fresh water helps to develop concentration skills and the well-being of the individual. We ensure that our children have access to cold, fresh drinking water throughout the school day. Our Healthy Schools co-ordinator is Mrs Rachel Harris.

Events

It is impossible to catalogue everything that goes on in the school so the sections below are designed to give you a flavour of the full range of experiences that the children obtain through school.

Annual events continue to include in the Autumn Term, the Harvest Assembly and the Christmas Concerts which were extended to two for the infants and one for the juniors so that all relatives could attend. It was great to return to Capel y Crwys for these.

The Spring Term saw the St David's Day concert celebrating our national patron saint. Again, this was held at the Vestry and big thank you to the school cook Mrs Jo James who prepared cawl and Welsh Cakes.

The Summer Term meant Sports Days for Infants and for Juniors.

Activities in School

Netball
Rounders
Cricket
Athletics
Football
Rugby
Swimming

Eco Club
Choir
Discover and Do Club
Cookery Club
Outdoor Schools
Gardening
Mad Science Club

Visits to the School

PC Ellis continues to visit the classes (Cyber Bullying, Anti smoking, Who What Where, Internet Safety, What's The Problem)
World Book Day
Children in Need
School Dental Nurse visited the STF
The Fire Brigade spoke to Yr2 and Yr5 pupils.
Red Café – to teach about fairtrade
Water Aid Assembly
Childline/NSPCC
Kerbkraft
School Nurse
PCSO Angela Clarke
EWO
Nina Morgan resident artist
Gower College
University of Wales Trinity St Davids

Trips

Pupils have enjoyed residential trips to Pendine, Port Eynon and Snowdonia.
Junior pupils have been to: Theatr Na Nog, The Big Pit, Techniquet, Caswell Bay, The Egypt Centre.
While Foundation Phase pupils have visited; St Fagan, The City Farm, Poundffald Farm and the Gower Heritage Centre.

The Eco Schools Programme

Crwys Primary School had their Platinum Green Flag renewed which is the highest award that a school can receive.

The Eco Schools programme provides a structure which acts as a vehicle for delivering Environment Education and also provides the learners with real life experiences of influencing their school's impact on the environment, which has included working with Welsh Water and Water Aid this year.

Rights Respecting School

Article 2 - All children have these rights no matter what!

At Crwys Primary we've been working hard this term to become a Rights Respecting School. The Rights Respecting Schools Award is a programme run by UNICEF that aims to put children's rights at the centre of education in the UK. This involves embedding children's rights into the ethos and culture of the school in order to improve the pupils' wellbeing.

As one of their first duties, our newly elected Rights Respecting Ambassadors, under the watchful eye of Mrs Harris, have been busy spreading the word around the school by ensuring that there are posters in every class.

Toilet Facilities:

The toilets are in a good state of repair and are cleaned regularly by the school cleaner.

Links to the Community

The Governors have been supporting the inclusion of news about the school in the Village Newsletter, the link with whole village events eg The Fete, Hogroast and the St David’s Day concert with provision for refreshments afterwards. The School also works with the Crwys District Sports Association in the use of the Crwys Woodland for school activities.

AREAS OF FOCUS FOR 2015-2016

The following were the areas of focus in terms of policies and strategies set for the school year – actions and results are shown in the second column

MAIN AREA OF FOCUS	ACHIEVEMENTS
<p>To improve provision to impact upon pupil achievement in English Language in particular with regard to the boys.</p>	<p>O5+ - All but one achieved O5+, an excellent achievement as many over performed following intervention. O6 – At the higher level, girls performed better than the boys’ 60%/22.22%, a gap of 37.78, a slight reduction on last year. L4+ - At level 4+ both the boys and girls achieved 100% L5+ - the difference between boys and girls at the higher level closed once again this year to 28.6%. However, it is pleasing to note that the actual percentage of boys who achieved L5 rose by 57% from 27.3% to 42.9%. Girls also rose from 57.1% to 71.4%, a 25% gain. The net effect is the gap has narrowed slightly.</p>
MAIN AREA OF FOCUS	ACHIEVEMENTS
<p>Develop digital competency in both teachers and pupils in order to underpin Literacy, Numeracy and Thinking Skills</p>	<p>There have been a number ADDs sessions arranged for both teaching and non-teaching staff. Staff are now proficient in the use of Hwb and Jit. Hwb is used as a platform for correspondence and is used to share documents and converse with pupils in some classes. Jit is effectively used to record evidence in reading and oracy tasks. This was noted as a strength in our STAP (Securing Teacher Assessment Programme; External Moderation) visit. The 360 degree safe questionnaire has been completed and a new e-safety policy has been created.</p> <p>The school has also received a visit from a School Governor who was greatly impressed by what she saw.</p> <p>Our Challenge Advisor also commented that the school had made strong progress in this area.</p>
<p>To improve and increase school attendance</p>	<p>Attendance 2016 – 96.12% Q2 (5th in Swansea) up from 95.3 Q4. This is as a result of a number of strategies put in place as a</p>

	school. Good attendance has a high priority and profile. We are currently 97.3% this year to date, a 1.1% rise on the data from the same time last year.
--	--

AREAS OF FOCUS FOR 2016-2017

MAIN AREA OF FOCUS	PERSON RESPONSIBLE
To improve standards in English, with particular focus on extended writing.	DS All Staff
To further develop the digital competency of pupils, staff and Governors	DS All Staff GB
To improve provision to impact upon the pupils' understanding of investigation work in Science.	DS KS2 Staff
Other priorities include: <ul style="list-style-type: none"> • Continue to improve pupil attendance • Physical environment • Outdoor Learning Opportunities 	DS All Staff GB

GOVERNORS' TARGETS FOR 2015-2016

The targets for the coming will be as follows:

- 4 meetings per year - achieved
- 75% attendance at meetings - achieved
- All governors to attend at least one training session per year – partially achieved
- To continue to improve facilities and premises of the school within the budget – new playground installed, new climbing wall and new boiler installed.
- To interrogate data to identify and monitor target groups (this to include Y7 data from Bishopston Comprehensive) – data reviewed at meetings
- Analyse and track two targets for the School Development Plan – focus was on attendance see information at beginning of report
- Maintain the Quality Mark Bronze Standards – under continual review

GOVERNORS' TARGETS FOR 2016/2017

The targets for the coming will be as follows:

- 4 meetings per year.
- 75% attendance at meetings.
- All governors to attend at least one training session per year
- To continue to improve the premises and facilities of the school within the budget.
- Analyse and track two targets for the School Development Plan(digital competency and monitor expected levels +1 across the school)
- Maintain the Quality Mark Bronze Standards

FINANCIAL STATEMENT

CITY AND COUNTY OF SWANSEA - EDUCATION DEPARTMENT

SCHOOL : Crwys Primary School

ESTABLISHMENT NO: 46713

END OF YEAR STATEMENT 2015/2016

BUDGET ALLOCATION	£643,857	TEACHING COSTS	£418,880
PUPIL NO. ADJUSTMENT	-£11,120	SUPPORT STAFF COSTS	£170,525
		CAPITATION	£41,482
ADJUSTED BUDGET ALLOCATION	£632,737	ENERGY COSTS	£9,269
		PREMISES RELATED COSTS	£38,446
		RECHARGES	£32,343
		GROSS EXPENDITURE	£738,964
OVER / UNDERSPEND 2015 / 2016	£6,185	INCOME	£37,803
INVESTMENT APRIL 2015	£58,551	FOUNDATION GRANT	£52,609
INVESTMENT APRIL 2016	£64,736	NET EXPENDITURE	£626,552